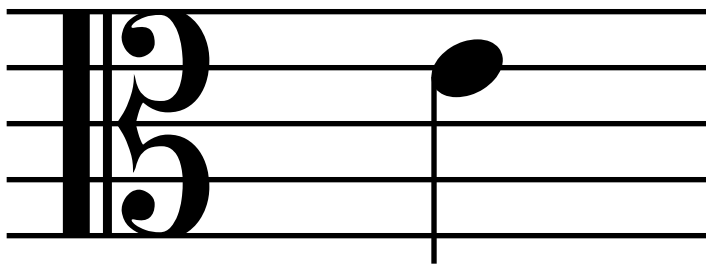


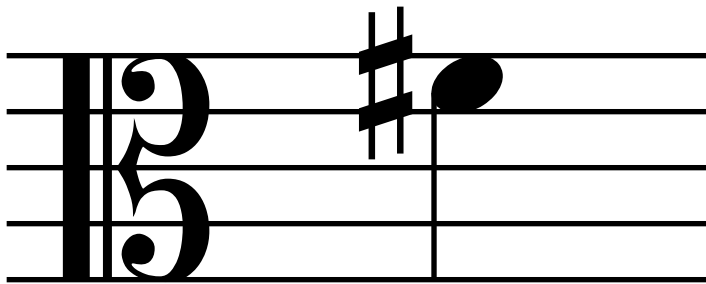
D

D string
(open)



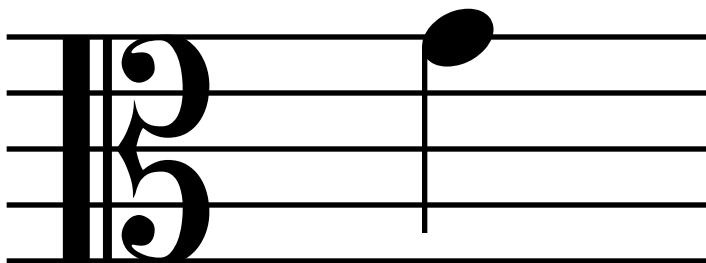
E

D string
1st finger



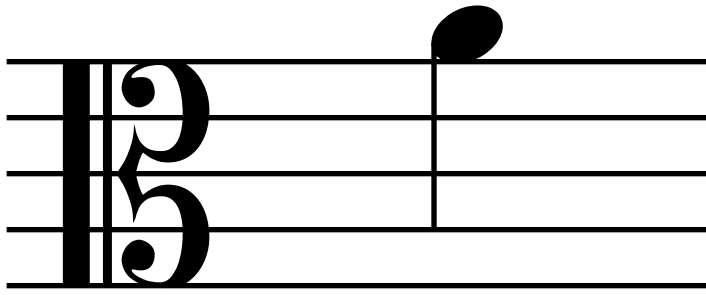
F#

D string
2 fingers

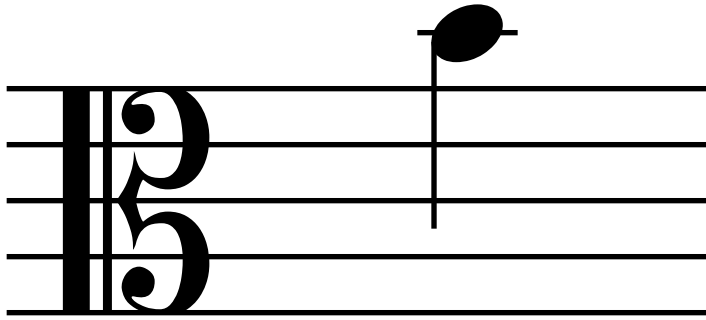


G

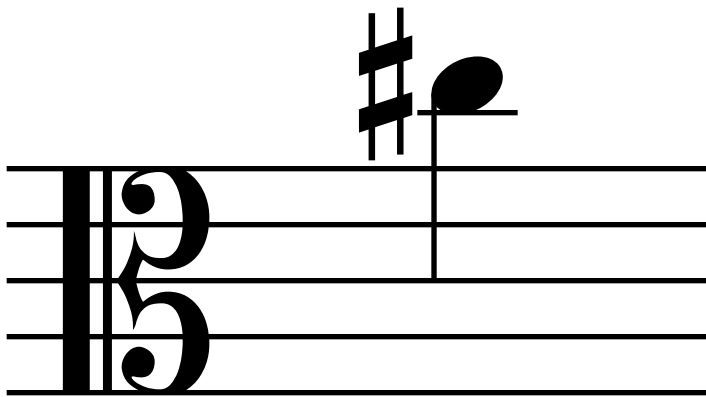
D string
3 fingers



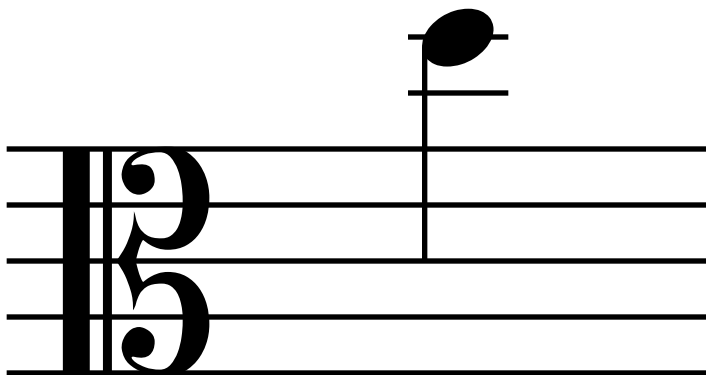
A A string
(open)



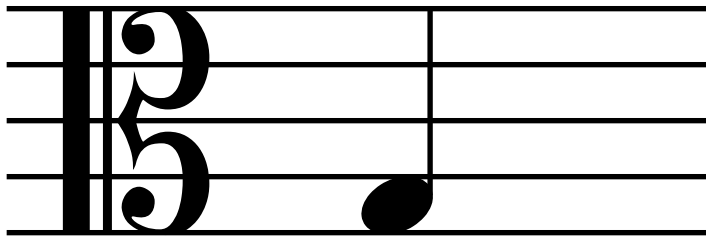
B A string
1st finger



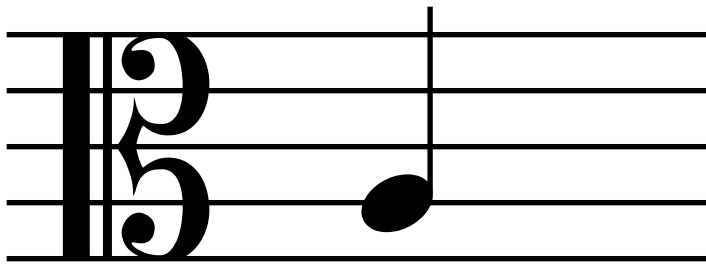
C# A string
2 fingers



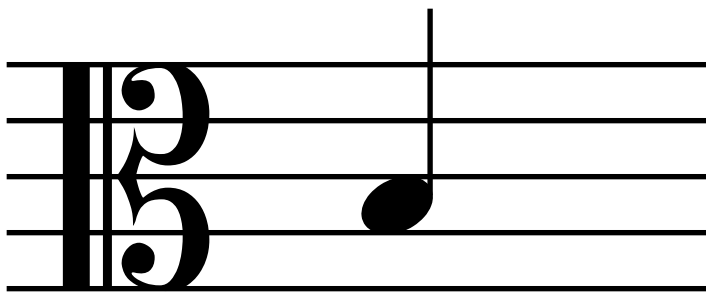
D A string
3 fingers



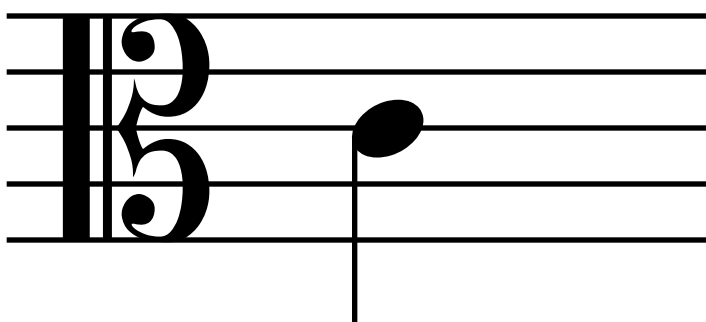
G G string
(open)



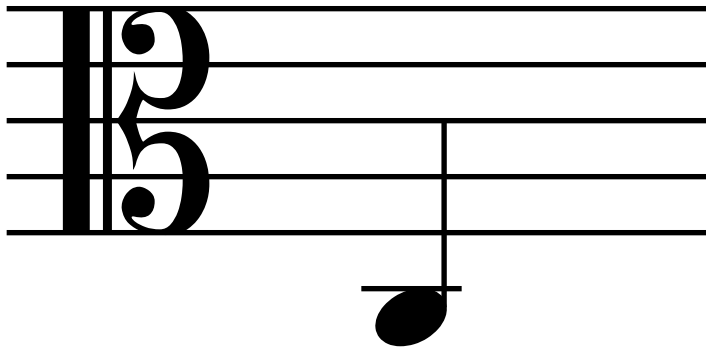
A G string
1st finger



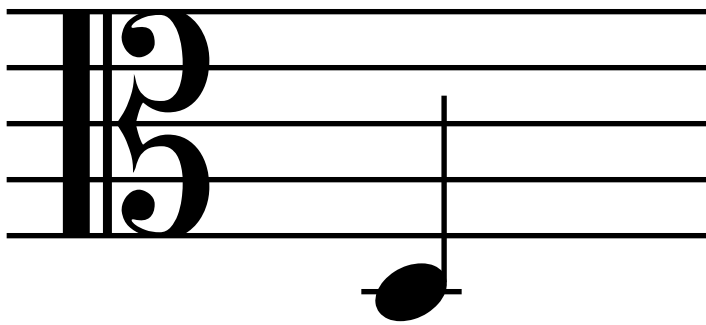
B G string
2 fingers



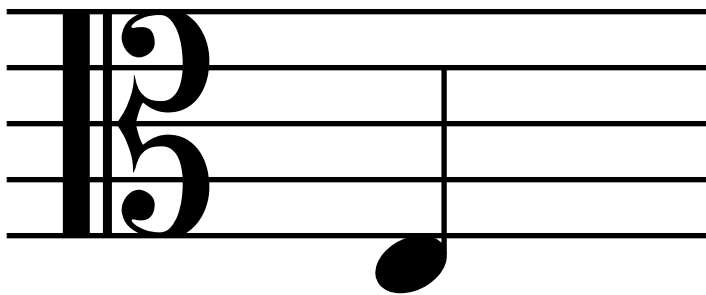
C G string
3 fingers



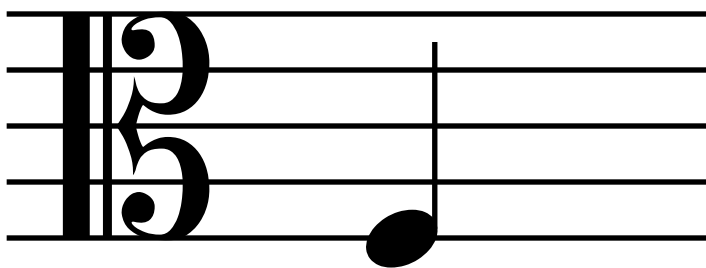
C C string
(open)



D C string
1st finger



E C string
2 fingers



F C string
3 fingers